

GEHL®

RS10-55

TELESCOPIC HANDLER



CAPACITIES

Lift Capacity (kg)	10,000 lbs. (4536)
Maximum Lift Height (m)	55'1" (16.8)
Capacity at Maximum Lift Height (kg)	5,000 lbs. (2268)*
Maximum Forward Reach (m)	41'2" (12.6)
Capacity at Max. Forward Reach (kg)	2,000 lbs. (908)
Max. Reach Below Grade (mm)	29" (737)

*with outriggers down

GENERAL SPECIFICATIONS

Approximate Weight (kg)	27,800 lbs. (12610)
Length – Less Forks (m)	21'0" (6.4)
Width (m)	8'3" (2.5)
Ground Clearance (mm)	18" (457)
Wheelbase (m)	10'4" (3.1)
Turning Radius (m)	13'11" (4.24)
Overall Height (m)	8'6" (2.6)
Frame Leveling	±10°
Fuel Capacity (L)	47 gal. (178)

TIRE OPTIONS

- 14.00 x 12 PR
- 14.00 x 24/12 PR - Foam Filled
- 13.00 x 24 Solid Rubber

ENGINE

Manufacturer	John Deere
Power (kW)	115 hp (86)
Aspiration	Turbocharged
Model	4045T Interim Tier IV
Rated Speed	2500 rpm

COMPONENTS

Transmission	Dana 4-speed Powershift
Maximum Travel Speed (km/hr)	19.3 mph (31.3)
Selective Steering	4-Wheel 2-Wheel Crab
Hydraulically Actuated Internal Wet-Disc Brakes	4-Wheel
Parking Brake	Spring-Applied, Hydraulic Release (SAHR) on Front Axle
Axle Manufacturer	Dana

HYDRAULIC SYSTEM

Pump Type	Gear
Total Capacity (L/min)	40 gpm (151)
System Pressure (bar)	3000 psi (207)
Hydraulic Reservoir Capacity (L)	45 gal. (170)

RS10-55

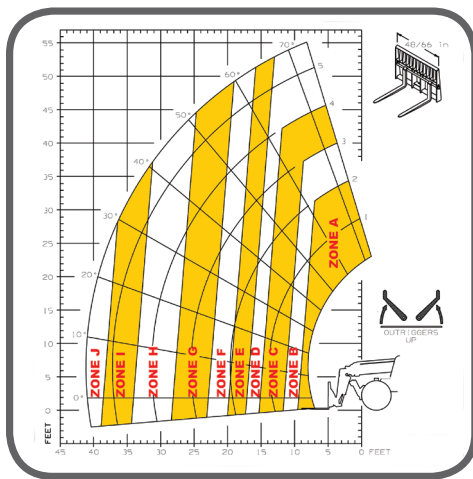
TELESCOPIC HANDLER

FEATURES

- 10° Frame Leveling (Left or Right)
- 10,000 lbs. (4536 kg) Capacity
- Automatic Self-Leveling Fork System
- 5,000 lbs. (2268 kg) Capacity at Full Lift Height
- Boom Control Joystick
- Maximum Lift Height - 55 ft. (16.8 m)
- Fork Tilt and Frame Level Joystick
- DYNATTACH® Quick Carriage Release
- SAHR Parking Brake
- Four Speed Power Shift Transmission
- Reverse Warning Horn
- Planetary Axles with a Limited Slip Front Differential
- Brake Lights and Back Up Light
- Four Wheel Wet Disc Brakes
- Right Hand Side Mounted Rear View Mirror
- Power Steering
- Left Hand Front Fender
- Selective Steering (Front Wheel, All Wheel, and Crab)
- Transmission Clutch Cut-Out
- 12-Volt Electric System
- Vandalism Protection
- Lockable Tool Box
- Engine Block Heater
- Rear Axle Stabilizer
- Dual Element Air Filter with Restrictor Indicator
- Auxiliary Hydraulics Package

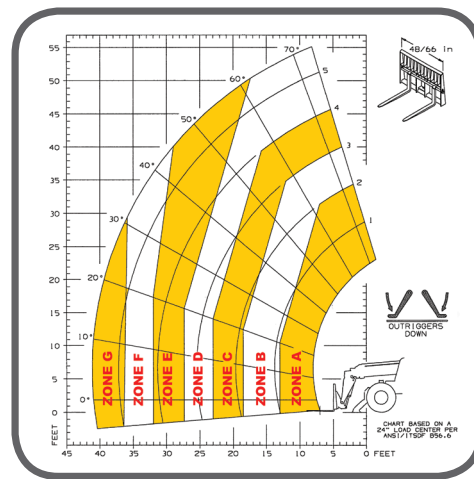
LOAD CHARTS

OUTRIGGERS UP



A	10,000 lbs. (4536 kg)
B	8,000 lbs. (3629 kg)
C	6,000 lbs. (2722 kg)
D	5,000 lbs. (2268 kg)
E	4,000 lbs. (1814 kg)
F	3,000 lbs. (1361 kg)
G	2,000 lbs. (907 kg)
H	1,000 lbs. (454 kg)
I	500 lbs. (227 kg)
J	250 lbs. (113 kg)

OUTRIGGERS DOWN



A	10,000 lbs. (4536 kg)
B	8,000 lbs. (3629 kg)
C	6,000 lbs. (2722 kg)
D	5,000 lbs. (2268 kg)
E	4,000 lbs. (1814 kg)
F	3,000 lbs. (1361 kg)
G	2,000 lbs. (907 kg)

Gehl reminds users to read and understand the operator's manual before operating any equipment. Also, make sure all safety devices and shields are in place and functioning properly.

Gehl reserves the right to add improvements or make changes in features and specifications at any time without notice or obligation.

For more information on Gehl equipment, call our hotline at

1-800-628-0491

or visit gehl.com

DEALER IMPRINT

GEHL
gehl.com

West Bend, WI 53095 U.S.A.

Tel: 262-334-9461

Fax: 262-338-7517

